

# Setting up your Libby account



## Step 1. Download the app

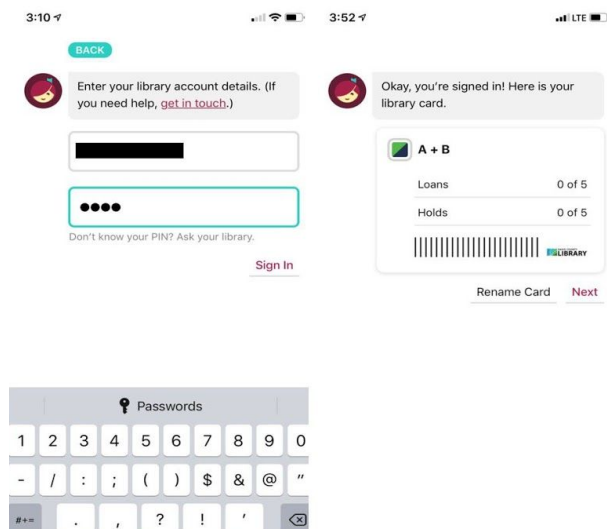
Install the Libby app from your device's app store.

[Apple App Store](#)

[Google Play](#)

[Windows Store](#)

Or, visit [libbyapp.com](http://libbyapp.com) in your Chrome, Firefox, Safari, or Edge browser.



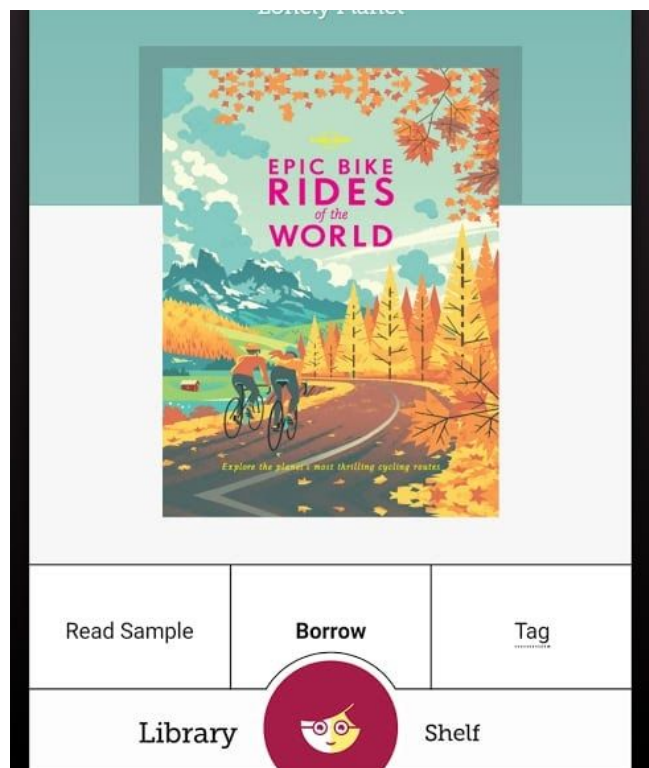
## Step 2. Add your library card

Add your library card and password / pin.

Then click the **“Sign in”** button.

## Step 3. Browse collection

Browse your library's collection and borrow a title.



## Step 4. Enjoy

Borrowed titles appear under Shelf > Loans and download to the app automatically when you're connected to Wi-Fi, so you can read them when you're offline.

From your Loans, you can:

**Tap** Read With... to choose where you'd like to read the book (Kindle or Libby), then finish sending to Kindle (U.S. libraries only) or start reading in Libby.

**Tap** Open Audiobook or Open Magazine to start reading or listening to that title.

**Tap** Manage Loan to see options like Renew and Return.

If you need more help with Libby, please visit [Libby Help](#). Happy reading!

Or alternatively, visit the Whanganui District Library and one of our staff members will be happy to help.